

# Avtron K875A

## Resistive Permanent Load Bank - 400 to 3000 KW

**Testing Your Emergency Standby Generator with a Load Bank Means Reliability When it Matters Most.**

### Key Features

- Outdoor Installation
- Fully Supported Load Elements
- No Cool Down Period Required
- Vertical Air Discharge
- Slide Out Resistor Cases
- Remote Operator Controls
- Easy Operation and Maintenance

Superior Avtron quality combined with simple operation and maintenance will provide years of trouble free service.

Avtron's extensive line of Load Bank and Industrial Resistor Products are solid performers used throughout the world.

For total technical support or additional information, please contact Avtron at (216) 573-7600 or [LBsales@Emerson.com](mailto:LBsales@Emerson.com).

Quality System Certified to ISO 9001

**The Avtron Model K875A Load Bank is ideal for high power resistive loading of AC generating systems.**

The Avtron K875A load bank can be utilized independently or as a modular building block for larger systems to meet a variety of power testing requirements. This load bank is ideal for permanent outdoor installation for routine load testing of standby diesel generating systems or for factory production line testing of (UPS) Uninterruptible Power Supplies, turbines, or engine generator sets.

The load bank features vertical air discharge for installation in areas where space is at a premium such as the rooftops of high-rise buildings. Weatherproof exhaust hoods provide maximum protection to the resistor cases and blower assemblies.

The K875A load bank incorporates state-of-the-art load bank design features and manufacturing techniques to provide years of trouble-free service. This model utilizes a modular design with common parts shared throughout the product range. This assures quick delivery, easy installation, and simple operation and maintenance.



**K875A 1250 KW  
Permanent Resistive  
Avtron Load Bank.**

# Avtron K875A

Resistive Permanent Load Bank - 400 to 3000 KW

## Specifications subject to change without notice.

### Construction

The load bank enclosure is constructed of heavy gauge aluminized steel with stainless steel exterior fasteners. Vertical airflow provides a compact footprint for tight installations. Permanent base is designed for mounting on floor, roof, or cement pad and is equipped with built-in forklift channels. Contactors are protected in a thermostatically controlled, heated enclosure.

### Resistor Elements

The resistive elements are manufactured of a corrosion resistant chromium alloy wire and are fully supported for long life.

### Control Power

The K875A requires control power of 120 VAC, single phase, 60 Hz (optional control power transformer available).

### Cooling

The resistive elements are air cooled by integrally mounted blower motors rated at 10 HP, 460 VAC, 3 phase, 60 Hz. No additional cooling period is required when load is removed.

### Controls

The 19" rack-mounted control panel is provided loose for remote mounting (control panel enclosure optional). Controls include a POWER ON-OFF switch, a POWER ON light, BLOWER ON-OFF push buttons with a BLOWER FAILURE light, OVERTEMPERATURE light, MASTER LOAD ON-OFF switch, and load step ON-OFF toggle switches.

### Optional Digital Metering

Avtron Advanced Digital Monitoring System (ADMS™) is available as an option for display of Volts, Amps, Frequency, and KW. ADMS™ also includes Communicator EXT™ Data Logging Software.

### Protection

The K875A features branch circuit fusing on all load steps and overtemperature protection. Differential pressure air switches on the blowers are electrically interlocked to remove load if the airflow is not sufficient to provide proper cooling.

### Load Capacity Ratings: (3 phase, 60 Hz)

Available Load Step Resolution: 5 or 50 KW

Rated KW	240/480 VAC	480 VAC
400		✓
450		✓
500	✓	✓
600		✓
650		✓
750	✓	✓
800		✓
900		✓
1000	✓	✓
1250		✓
1500	✓	✓
1750		✓
2000		✓
2500		✓
3000		✓

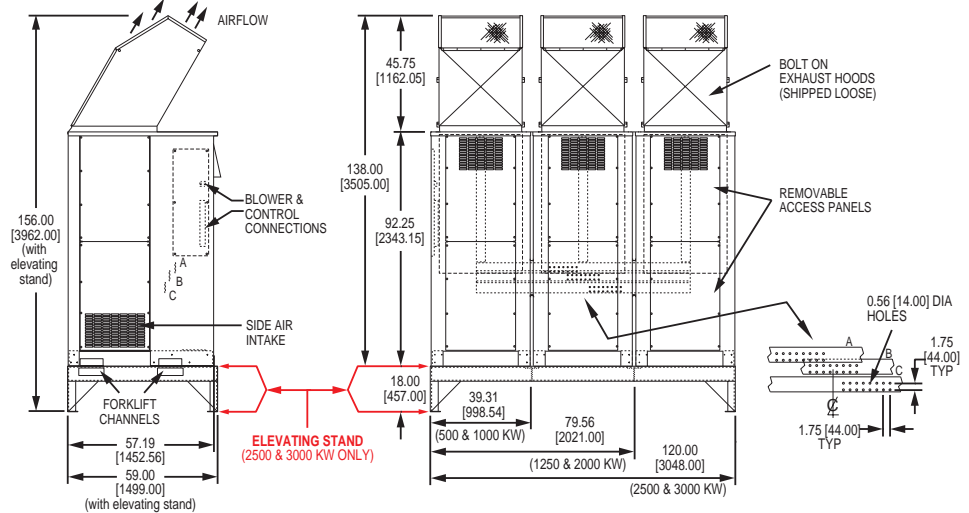
### Load Bank Weight (approx.)

400-1000 KW: 1500 lbs. [680 kg]  
 1250-2000 KW: 3000 lbs. [1360 kg]  
 2500-3000 KW: 5500 lbs. [2495 kg]

### Options

- SIGMA™ Network Control
- ADMS™ Digital Metering (V, A, KW, Hz) with Communicator EXT™ Data Logging Software
- Meter and Control Panel Enclosure
- Control Transformer
- Automatic Load Step Controller
- Low Profile with Gravity Louvers
- Low dB Design
- -40°F Arctic Design

**NOTE** Designs for international 50/60 Hz voltages or custom DC designs are also available. Consult factory. Unit is intended for outdoor operation. Refer to instruction manual for important safety considerations.



All dimensions are in inches [millimeters].



**Emerson Network Power**

Avtron • 6255 Halle Drive, Cleveland, Ohio 44125, U.S.A.  
 216-573-7600 • FAX: 216-573-5953 • LBSales@Emerson.com

[EmersonNetworkPower.com/loadbank](http://EmersonNetworkPower.com/loadbank)

Emerson. Consider it Solved and Emerson Network Power are trademarks of Emerson Electric Co. or one of its affiliated companies. All the other marks are the property of their respective owners.

Communicator EXT™ is a trademark of Electro Industries/GaugeTech. ADMS™ is a trademark of Avtron. SIGMA™ is a trademark of NJ Froment & Co. Ltd. Specifications subject to change without notice.

©2015 Emerson Network Power

Bulletin 420 • Rev. H

**EMERSON. CONSIDER IT SOLVED.™**