

LOAD BANK 4100 (SEE CHART)

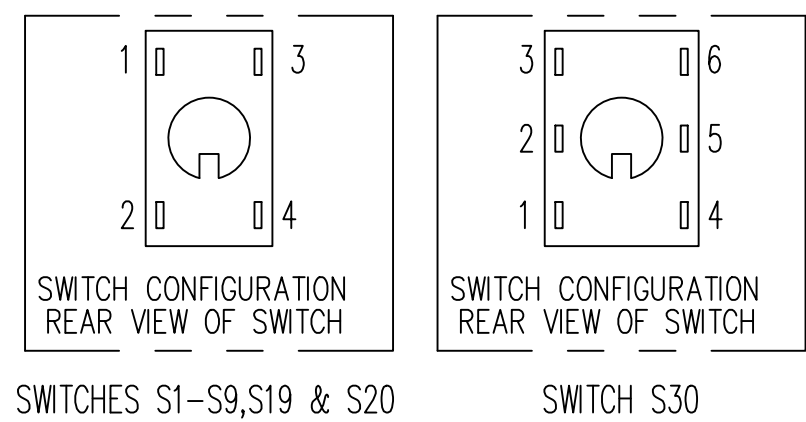
LOAD BANK P/N	CONTROL PANEL P/N	KW	VOLTS	LOAD SWITCHES USED	RELAYS USED
D34084-1	D33873-1	50	208	S4-S7	K1-K5,K71,K72,K99
D34084-2	D33873-2	100	208	S4-S8	K1-K9,K71,K72,K99
D34084-3	D33873-3	150	208	S4-S9	K1-K13,K71,K72,K99

CONTROL PANEL (SEE CHART)

- 5- FOR REMOTE LOAD DUMP IN AUTO MODE, ADD N/C CONTACT IN SERIES WITH TRANSFER CONTROL CONTACT.
- 4- REMOVE JUMPER AT TB1(5-7) AND TB11(8-9) FOR AUTO OPERATION WHEN INSTALLING LOAD SHED OPTION.
- 3- FOR REMOTE LOAD DUMP INSTALL N/C CONTACT. OTHERWISE INSTALL INTERCONNECTION WIRE.
- 2- --- DASH LINES REPRESENT CUSTOMER WIRING.
— SOLID LINES REPRESENT FACTORY WIRING.
- 1- WIRE CODE:
 - B - DENOTES WIRE TO BE BLACK #22 AWG (PN 390001)
 - W - DENOTES WIRE TO BE WHITE #22 AWG (PN 390001)
 - A - DENOTES WIRE TO BE BLACK #16 AWG (PN 390008)
 - W - DENOTES WIRE TO BE WHITE #16 AWG (PN 390008)
 - G - DENOTES WIRE TO BE GREEN #16 AWG (PN 390008)
 - B - DENOTES WIRE TO BE BLACK #14 AWG (PN 390011)
 - G - DENOTES WIRE TO BE GREEN #14 AWG (PN 390011)
 - 10 - DENOTES WIRE TO BE BLACK #10 AWG (PN 390016)
 - 8 - DENOTES WIRE TO BE BLACK #8 AWG (PN 390019)

- 11- NOT REQUIRED WHEN CONTROL TRANSFORMER OPTION IS PRESENT.
- 10- IF EXTERNAL BLOWER POWER IS REQUIRED, REMOVE WIRING BETWEEN TB11 (28-30) AND THE MAIN BUS. CONNECT EXTERNAL VOLTAGE SUPPLY TO TB11 (28-30).
- 9- IF A METERING OPTION IS PRESENT, WIRING FROM PHASE A MUST PASS THROUGH CT1 AND WIRING FROM PHASE C MUST PASS THROUGH CT2.
- 8- IF AN OPTIONAL BLOWER MOTOR CIRCUIT FROM SHEET 3 IS PRESENT, DO NOT INSTALL WIRING BETWEEN BLOWER INPUT AND THE LOAD BUS.
- 7- 2P DENOTES TWO RESISTANCE ELEMENTS IN PARALLEL.
- 6- FUSE REPLACEMENT CHART:
CONTROL
 F1,F212 - 600V FAST ACTING, CLASS CC, 200 KAIR
 F203-F205 - 600V, DUAL ELEMENT TIME DELAY, CLASS J, 300 KAIR
 F100-F102,F210,F211 - 600V, TIME DELAY, CLASS CC, 200 KAIR
LOAD
 ALL LOAD STEP FUSES ON SHEETS 2 & 3 ARE 300V, FAST ACTING, CLASS T, 200 KAIR.

DESIGNATION CODE
 AS - DENOTES AIRFLOW SWITCH (S12)
 ML - DENOTES MASTER LOAD (S20)
 MS - DENOTES MOTOR STARTER (K71)
 OL - DENOTES OVERLOAD RELAY (K72)
 TS - DENOTES OVERTEMP SWITCH (S13 & S14)



REV.	BY	DATE	DESCRIPTION
J	LA3759	SJ	JPH 6/07/19
			REVISED PER ECN
H	LA3739	JRF	SRM 4/11/19
			REV SHT 3
G	LA3391	SJ	GG 7/13/18
			UPDATED MODEL REFERENCE
F	LA1919	AVC	JPH 5/29/15
			REVISED PER ECN
E	LA1672	AVC	GG 9/26/14
			ACAD TEMPLATE UPDATED
D	LA1067	RGR	JPH 11/1/13
			REVISED PER ECN
C	LA0394	JAF	CMK 8/23/10
			REVISED PER ECN
B	CE071	JJF	DK 5/20/05
			REVISED PER ECN
A	CD312	JJF	JPH 2/10/03
			REVISED PER ECN

PROJECT NAME:		ASCO POWER TECHNOLOGIES, L.P.
BY	DATE	MANUFACTURING TOLERANCES TO BE IN ACCORDANCE WITH ASCO PROCEDURE MP-1-003. FOR PLASTIC PARTS SEE MP-1-005.
DRAWN BY	JAF	12/9/02
CHECKED	JJF	12/10/02
PROJECT APPROVAL	JPH	12/10/02
FINAL APPROVAL	AV	12/10/02
SCALE	1:1	SIZE DS
DWG. NO.	D34089	
ECN	LA3759	SHEET 1 OF 3

LOAD BANK 4100 (SEE CHART)

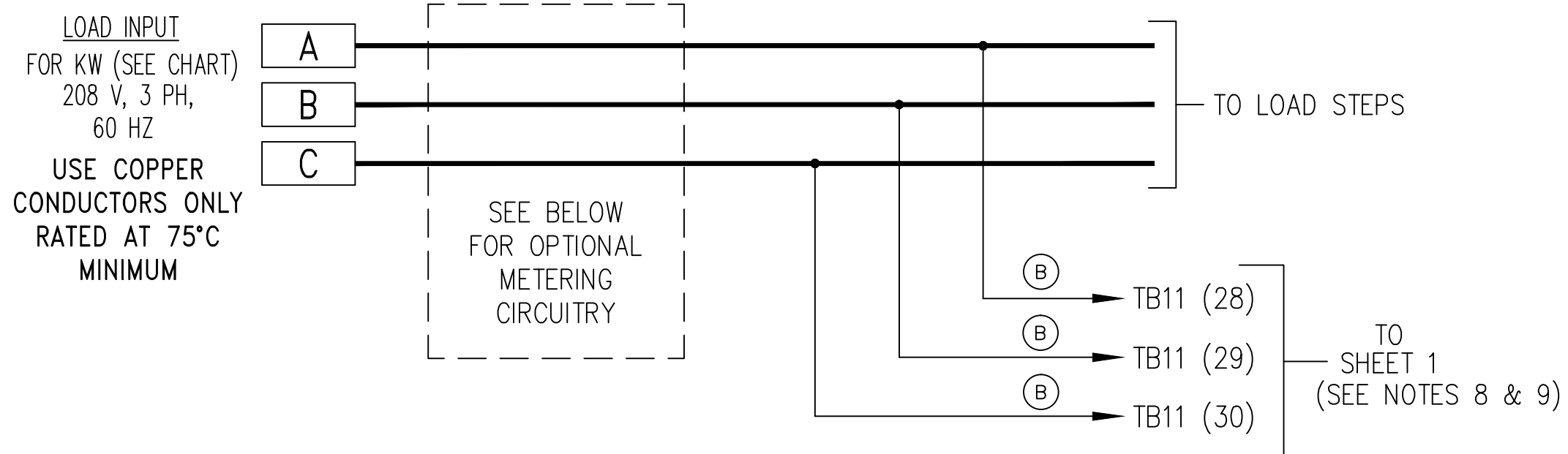
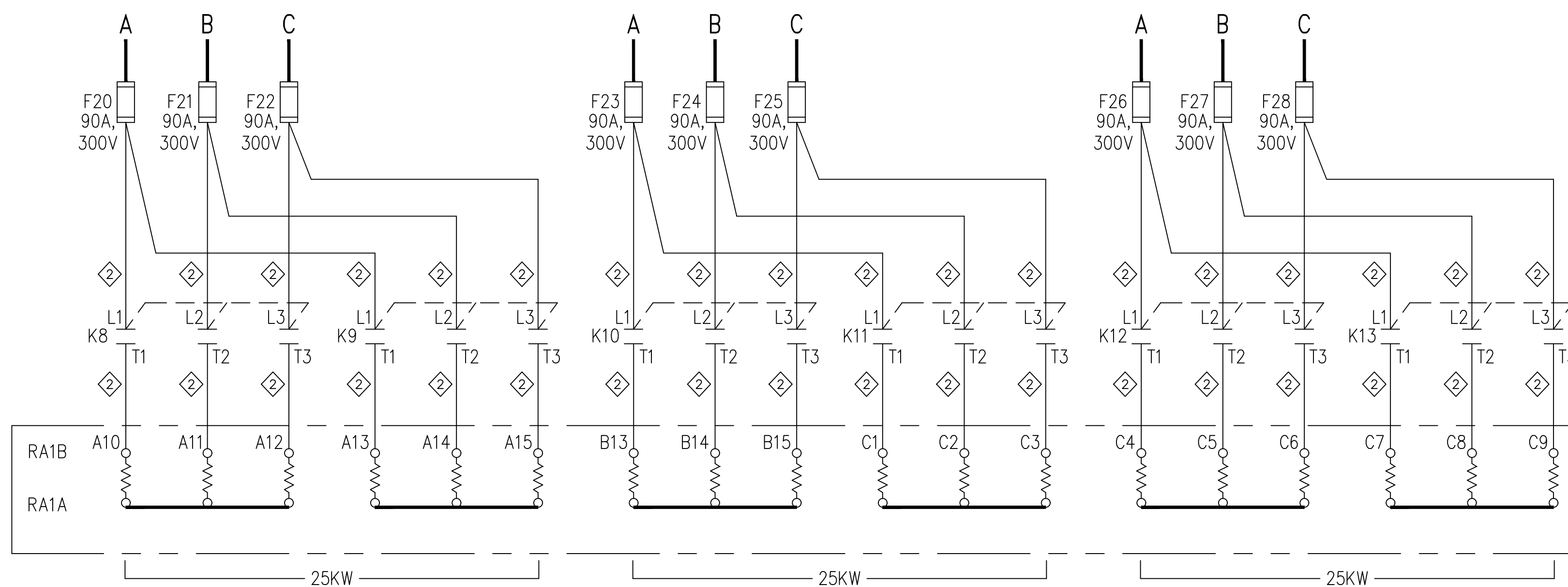
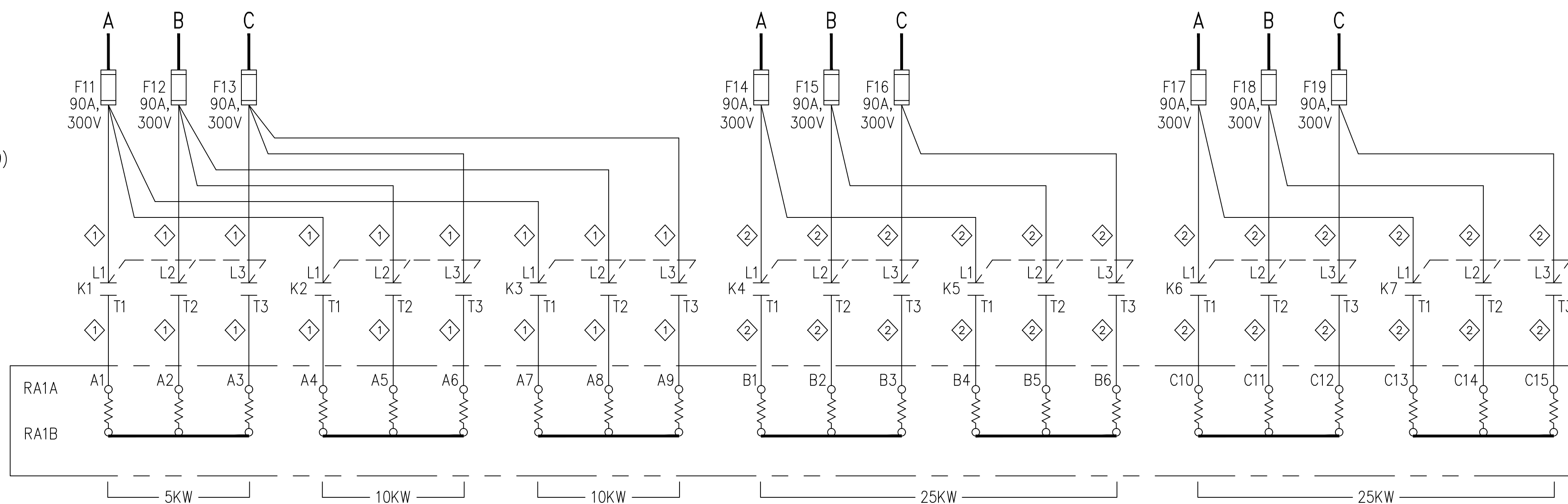
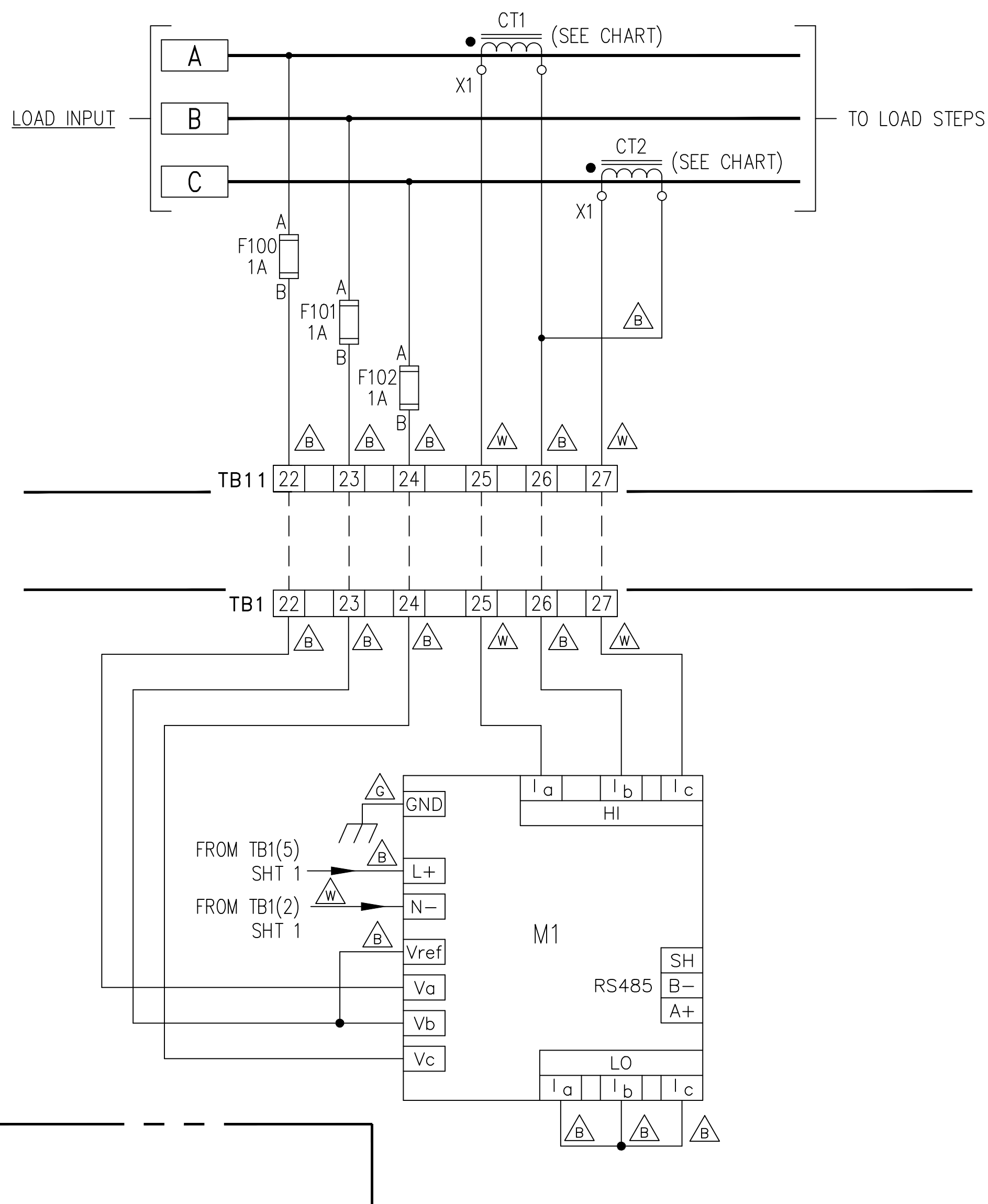


CHART		
OPTION #	METER OPTION	C.T. RATIO
20	D34486-1	100:5
21	D34486-2	200:5
22	D34486-3	300:5
23	D34486-4	500:5

METER OPTION (SEE CHART)



NOTE: WIRES FROM BUS BARS A, B, & C TO FUSES ARE ALL INDIVIDUAL RUNS.
BOLD LINES FROM FUSES INDICATE DIRECT CONNECTION TO RESPECTIVE
BUS BARS.

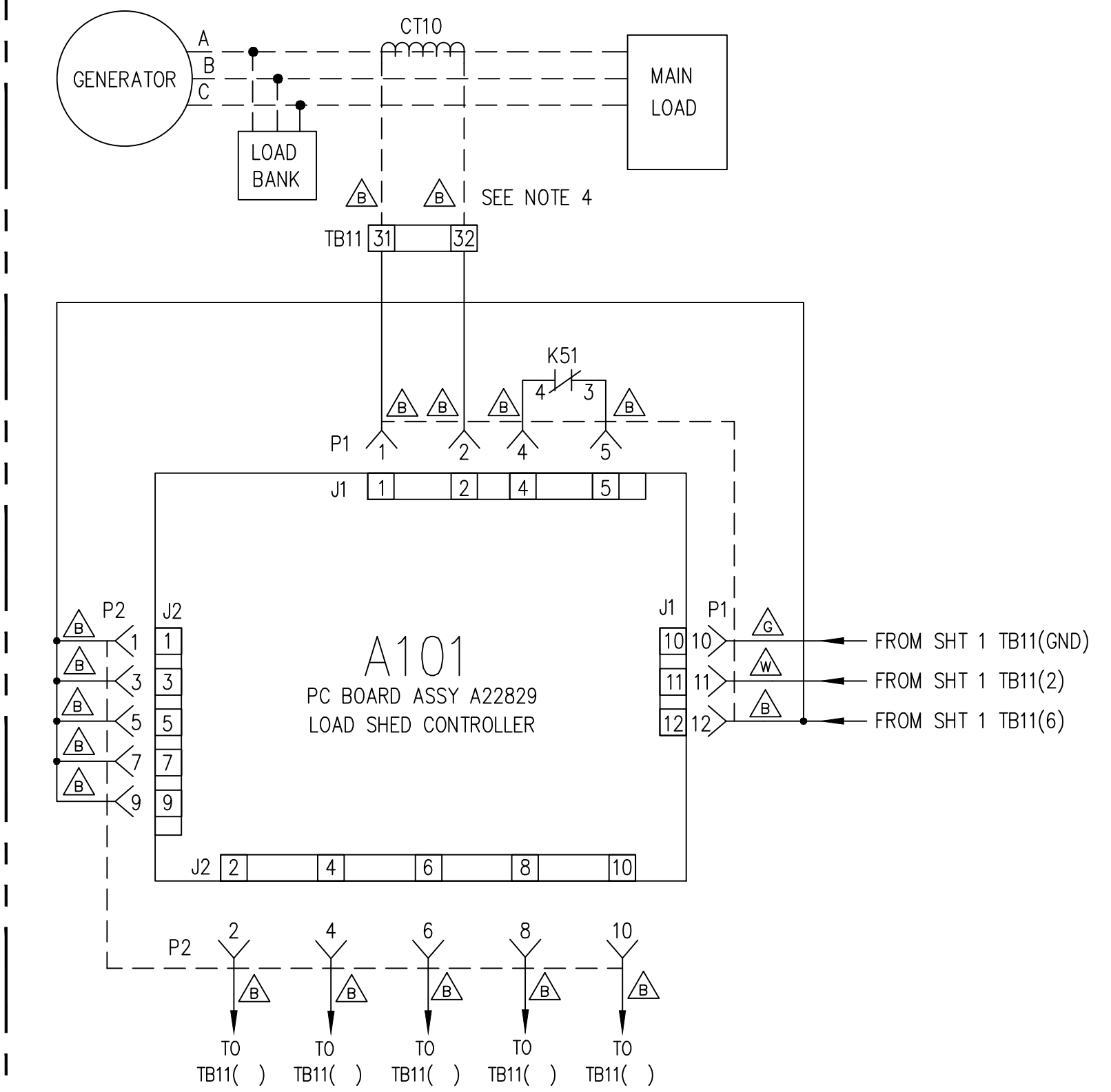
SEE SHEET 1 FOR NOTES AND WIRE CODE

F	LA1919	AVC	JPH	5/29/15
	REVISED PER EGN			
E	LA1672	AVC	GG	9/26/14
	ACAD TEMPLATE UPDATED			
D	LA1067	RGR	JPH	11/1/13
	REVISED PER EGN			
C	LA0394	JAF	CMK	8/23/10
	REVISED PER EGN			
B	CE071	JJF	DK	5/20/05
	REVISED PER EGN			

PROJECT NAME:		REV. TO SHEET	ECN NO.	BY	APP.	DATE
SCHEMATIC/INTCON DIAGRAM						
BY	DATE	MANUFACTURING TOLERANCES TO BE IN ACCORDANCE WITH ASCO PROCEDURE MP-1-003. FOR PLASTIC PARTS SEE MP-1-005		ASSEM. REF. NO.	COMPUTER GENERATED DRAWING	
DRAWN BY	JAF	12/9/02			SCALE	1:1
CHECKED	JJF	12/10/02	PROPERTY OF ASCO POWER TECHNOLOGIES. USE PERMITTED FOR OUR WORK ONLY. ALL RIGHTS OF DESIGN OR INVENTION ARE RESERVED.		SIZE	DS
PROJECT APPROVAL	JPH	12/10/02			DWG. NO.	D34089
FINAL APPROVAL	AV	12/10/02	ASCO® ASCO POWER TECHNOLOGIES, L.P. FLORHAM PARK, NEW JERSEY 07932 U.S.A.		ECN	LA3759
					SHEET	2 OF 3

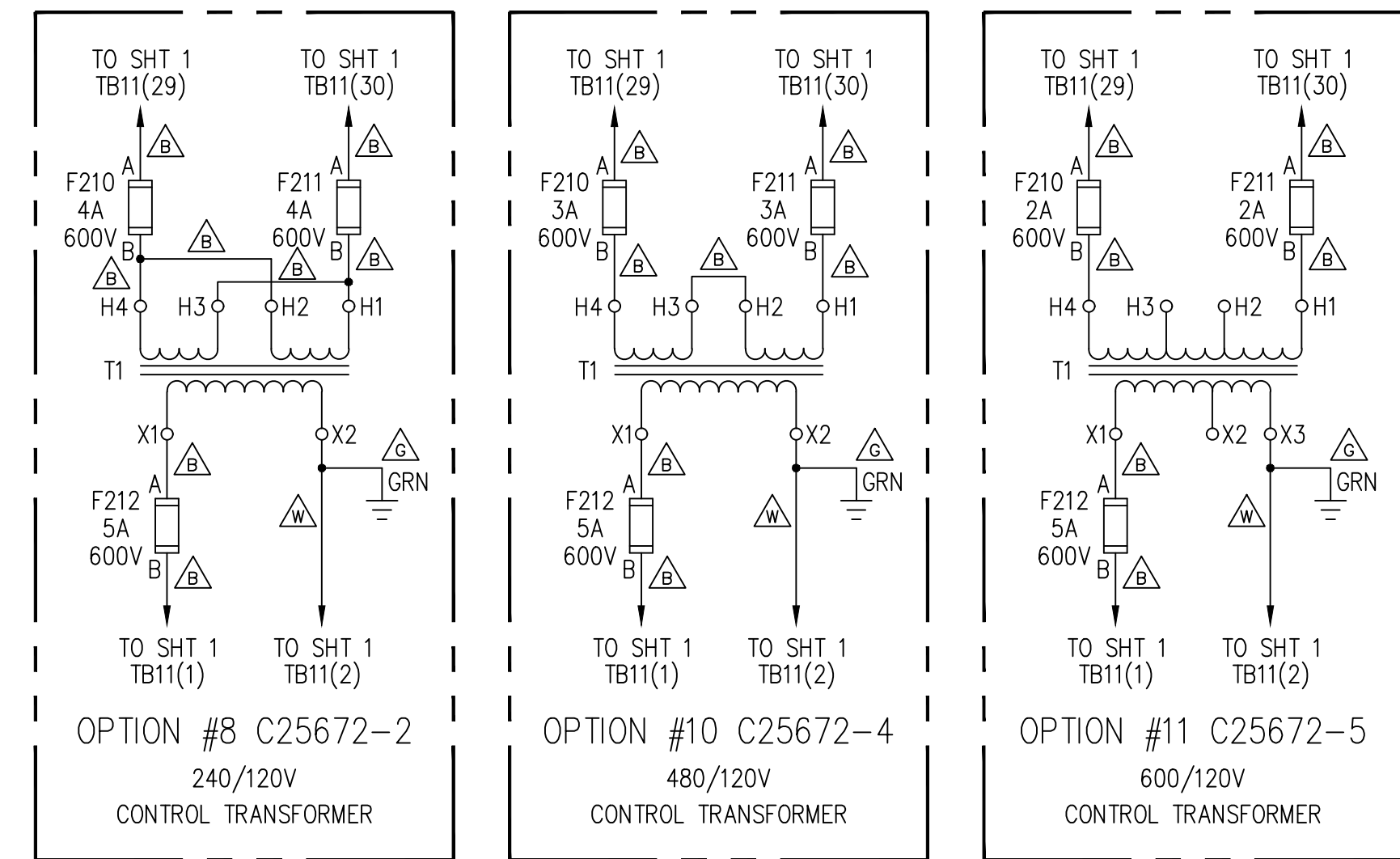
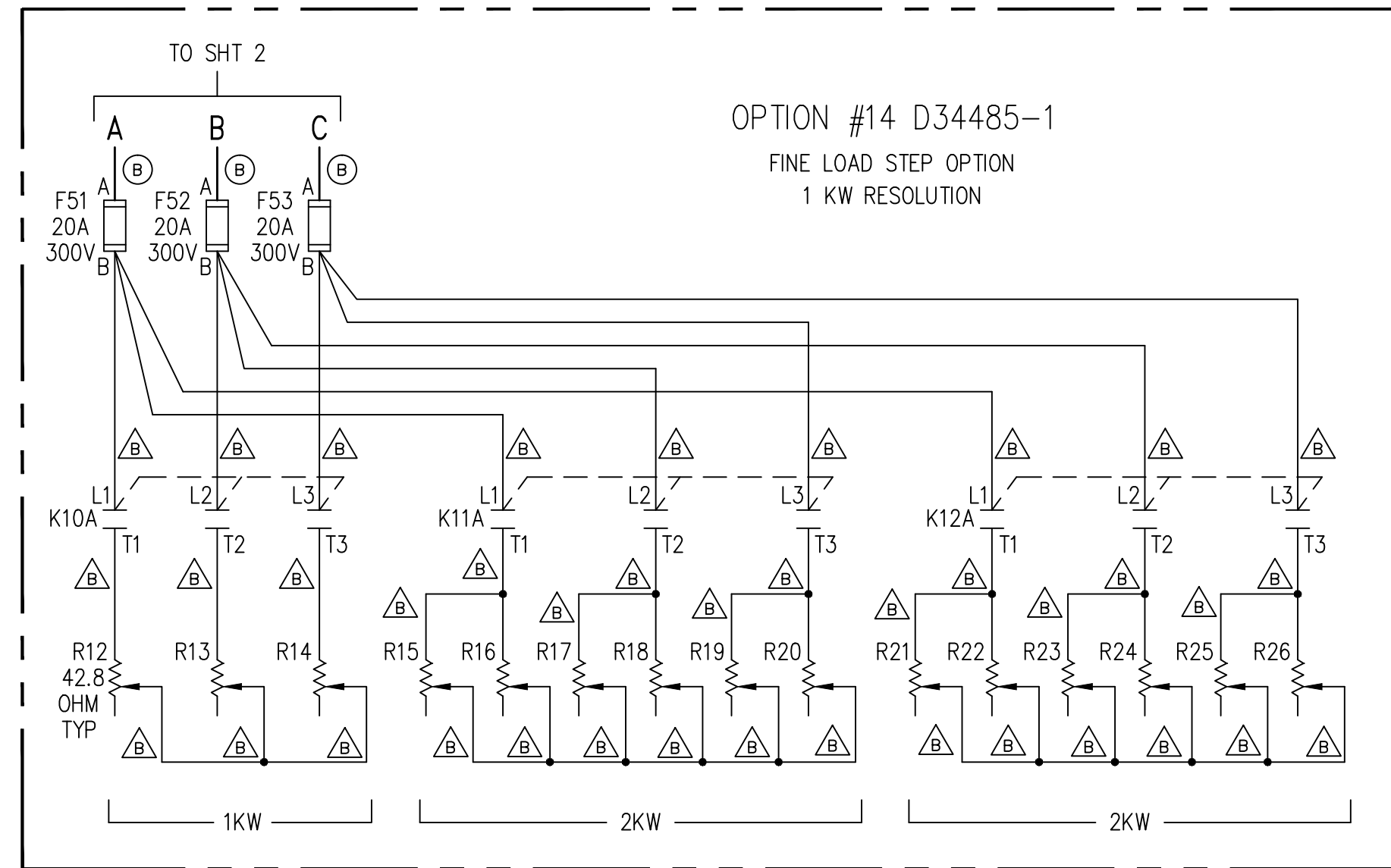
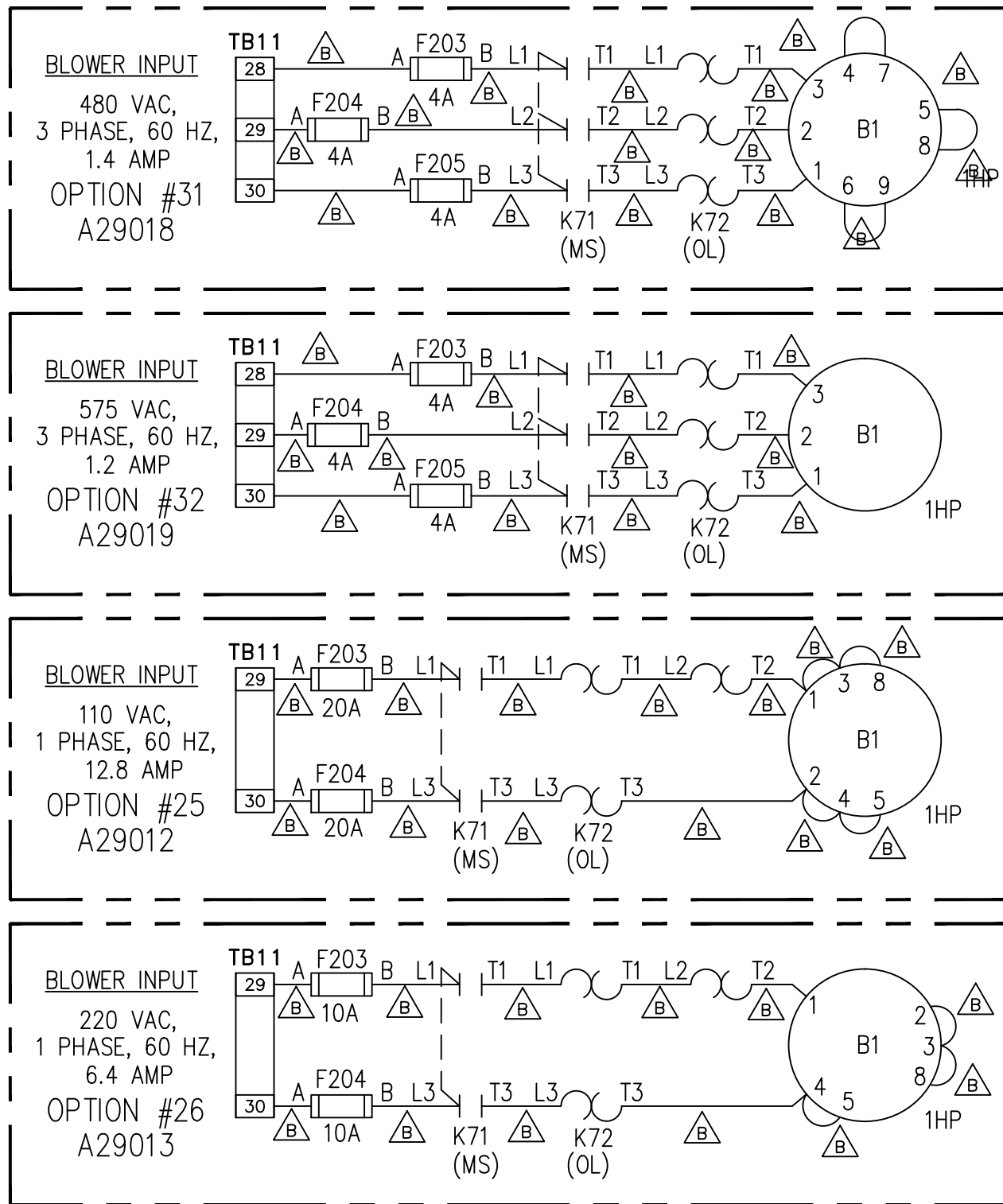
LOAD BANK 4100 (SEE CHART)

PART OF LOAD SHED OPTIONS 3,4,5 OR 6 A29011-



A101 (P2)					
PC BD. TERMINAL	2	4	6	8	10
LOAD SHED OPTION #	WIRE FROM ABOVE POINTS TO LOAD BANK (TB11)				
A29011-1	17	18	19	NC	NC
A29011-2	17	18	19	20	NC
A29011-3	17	18	19	20	21
A29011-4	16	17	18	NC	NC

1. ALL WIRING TO BE BLACK #16 AWG (PN 390008) UNLESS OTHERWISE NOTED.
2. ADJUST VARIABLE RESISTORS ON PC BOARD A101 (R21,R34,R47,R60 & R73) PER PROJECT NOTES.
3. ADJUST VARIABLE RESISTORS ON PC BOARD A101 (R26,R39,R52,R65 & R78) TO 3 SECONDS, ADJUST (R14) TO 5 SECONDS.
4. DASHED LINES REPRESENT CUSTOMER WIRING.



J	LA3759	SJ	JPH	6/07/19
H	LA3739	JRF	SRM	4/11/19
F	LA1919	AVC	JPH	5/29/15
E	LA1672	AVC	GG	9/26/14
D	LA1067	RGR	JPH	11/1/13
C	LA0394	JAF	CMK	8/23/10
B	CE071	JJF	DK	5/20/05
A	CD312	JJF	JPH	2/10/03

PROJECT NAME: _____

SCHEMATIC/INTCON DIAGRAM

THIRD ANGLE PROJECTION

BY	DATE	MANUFACTURING TOLERANCES TO BE IN ACCORDANCE WITH ASCO PROCEDURE MP-1-003. FOR PLASTIC PARTS SEE MP-1-005.	ASSEM. REF. NO.	COMPUTER GENERATED DRAWING
DRAWN BY	JAF	12/9/02		SCALE 1:25 SIZE DS
CHECKED	JJF	12/10/02		DWG. NO. D34089
PROJECT APPROVAL	JPH	12/10/02		REV. PER ECN
FINAL APPROVAL	AV	12/10/02		REV. PER ECN

ASCO POWER TECHNOLOGIES, L.P.
FLORHAM PARK, NEW JERSEY 07932 U.S.A.

ECN LA3759 SHEET 3 OF 3