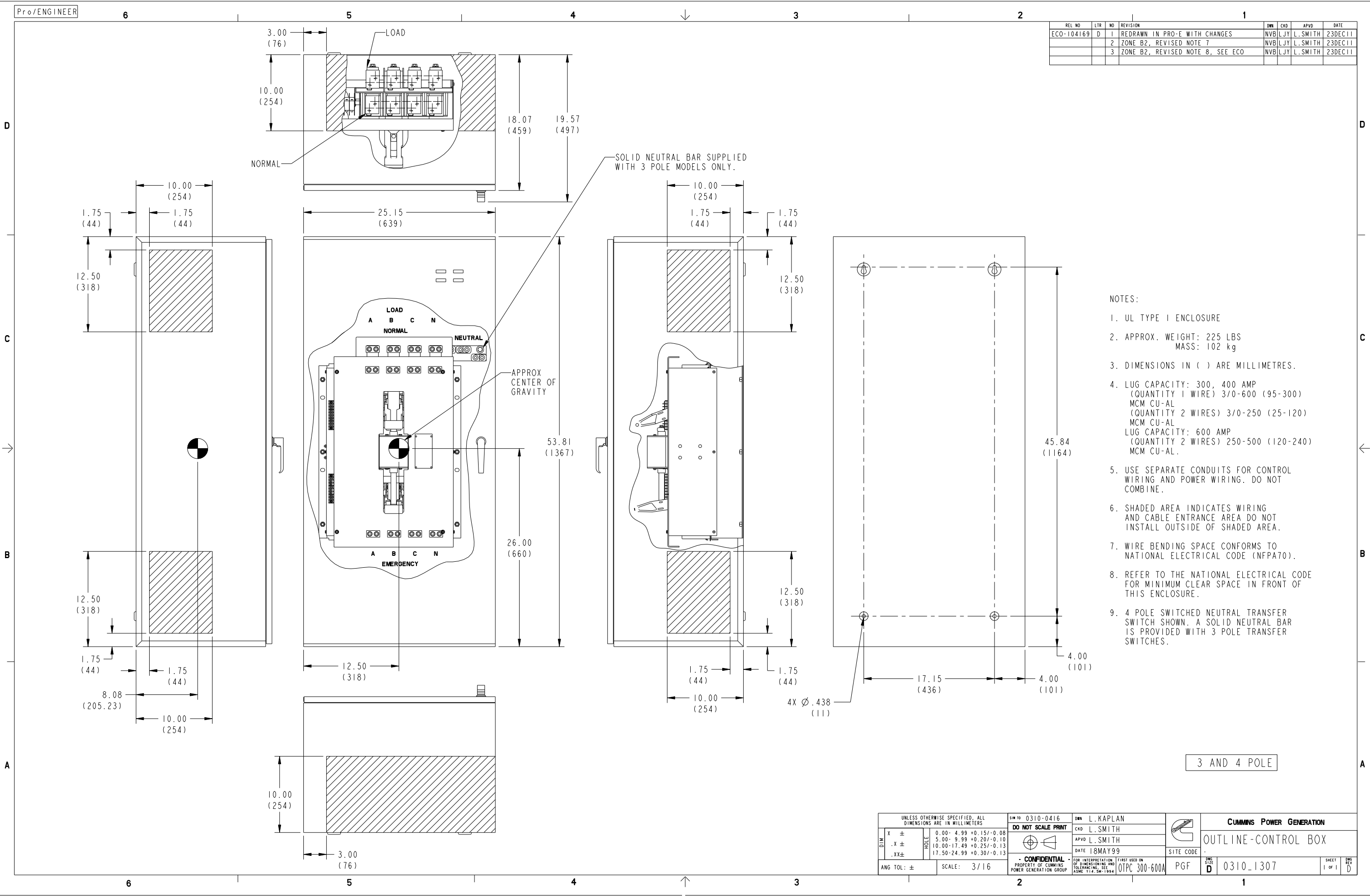


REL NO	LTR	NO	REVISION	DWN	CKD	APVD	DATE
ECO-104169	D	1	REDRAWN IN PRO-E WITH CHANGES	NVB	LJY	L.SMITH	23DEC11
		2	ZONE B2, REVISED NOTE 7	NVB	LJY	L.SMITH	23DEC11
		3	ZONE B2, REVISED NOTE 8, SEE ECO	NVB	LJY	L.SMITH	23DEC11



- NOTES:
- UL TYPE I ENCLOSURE
 - APPROX. WEIGHT: 225 LBS
MASS: 102 kg
 - DIMENSIONS IN () ARE MILLIMETRES.
 - LUG CAPACITY: 300, 400 AMP
(QUANTITY 1 WIRE) 3/0-600 (95-300)
MCM CU-AL
(QUANTITY 2 WIRES) 3/0-250 (25-120)
MCM CU-AL
LUG CAPACITY: 600 AMP
(QUANTITY 2 WIRES) 250-500 (120-240)
MCM CU-AL.
 - USE SEPARATE CONDUITS FOR CONTROL WIRING AND POWER WIRING. DO NOT COMBINE.
 - SHADED AREA INDICATES WIRING AND CABLE ENTRANCE AREA DO NOT INSTALL OUTSIDE OF SHADED AREA.
 - WIRE BENDING SPACE CONFORMS TO NATIONAL ELECTRICAL CODE (NFPA70).
 - REFER TO THE NATIONAL ELECTRICAL CODE FOR MINIMUM CLEAR SPACE IN FRONT OF THIS ENCLOSURE.
 - 4 POLE SWITCHED NEUTRAL TRANSFER SWITCH SHOWN. A SOLID NEUTRAL BAR IS PROVIDED WITH 3 POLE TRANSFER SWITCHES.

3 AND 4 POLE

UNLESS OTHERWISE SPECIFIED, ALL DIMENSIONS ARE IN MILLIMETERS		SIM TO 0310-0416	DWN L. KAPLAN		CUMMINS POWER GENERATION	
DO NOT SCALE PRINT		CKD L. SMITH	APVD L. SMITH		OUTLINE-CONTROL BOX	
DATE 18MAY99		DATE 18MAY99	SITE CODE	PGF		
ANG TOL: ±		SCALE: 3/16	FOR INTERPRETATION OF DIMENSIONING AND TOLERANCING, SEE ASME Y14.5M-1994	FIRST USED ON OTPC 300-600A	SHEET 1 OF 1	
					D 0310_1307	