

# Avtron K975A

## Resistive Permanent Load Bank - 1500 to 2500 KW

**Testing Your Emergency Standby Generator with a Load Bank Means Reliability When it Matters Most.**

### Key Features

- Outdoor Installation
- Temperature Controlled Weather-proof Contactor Enclosure
- No Cool Down Period Required
- Optional DC Designs
- Standard 19" Remote Control Panel with Optional Enclosure
- Fully Supported Load Elements

Superior Avtron quality combined with simple operation and maintenance will provide years of trouble free service.

Avtron's extensive line of Load Bank and Industrial Resistor Products are solid performers used throughout the world.

For total technical support or additional information, please contact Avtron at (216) 573-7600 or [LBsales@Emerson.com](mailto:LBsales@Emerson.com).

Quality System Certified to ISO 9001

### The Avtron Model K975A Load Bank is designed for testing AC generating systems and UPS.

The Avtron K975A load bank can be utilized independently or as a modular building block for larger systems to meet a variety of requirements. Standard units are designed for 480 volt operation, 3 phase, and are available in 1500 to 2500 KW load capacity models. This load bank series incorporates the latest state-of-the-art load bank design features and manufacturing techniques. The K975A is designed for testing AC generating systems, Uninterruptible Power Supplies (UPS), in production line and laboratory environments.

The contactors are enclosed in a thermostatically controlled heated enclosure to help prevent problems caused by condensation. This enclosure is sealed with a rubber gasket to protect the components from environmental contamination.

The K975A load bank contains resistive elements and blower motors in a rigid structure of formed heavy gauge steel. Designed for outdoor installation, the K975A utilizes a screened air inlet and exhaust louver to protect the motors and resistive assemblies.

Carefully engineered and manufactured resistive elements are designed to operate at a fraction of their maximum temperature rating. This ensures more stable loading, extends their operating life and eliminates the need for a cool down period after each loading session.



**K975A 1500 KW  
Permanent Resistive  
Avtron Load Bank.**

# Avtron K975A

Resistive Permanent Load Bank - 1500 to 2500 KW

## Specifications subject to change without notice.

### Construction

Heavy gauge steel structure provides a rigid enclosure. Removable panels with rubber gaskets protect contactors from weather. Screened air inlet and louvered exhaust opening protect the load bank from foreign objects and weather. Horizontal airflow provides maximum protection and reliability in an outdoor environment. Upright construction minimizes footprint. Permanent base is designed for mounting on floor, roof, or cement pad and is equipped with built-in forklift channels.

### Resistor Elements

The resistive elements are designed by Avtron and manufactured of a corrosion resistant chromium alloy wire. Resistive elements are fully supported over their entire length for improved operating life.

### Control Power

The K975A requires control power of 120 volts, single phase, 60 Hz, 15 amps (control transformer optional).

### Cooling

The resistive elements are air cooled by dual self-contained 5, 10, or 15 HP blowers requiring 460 volts, 3 phase, 60 Hz. No additional cooling period is required when load is removed from the elements. Optional voltages available.

### Controls

Contactors are protected in a thermostatically controlled, heated enclosure. The 19" [482.6] rack-mounted control panel includes a POWER ON-OFF switch, a POWER ON light, BLOWER ON-OFF push buttons with a BLOWER FAILURE light, MASTER LOAD ON-OFF switch, and load step switches.

### Protection

The K975A differential pressure air switch is electrically interlocked to remove load if the airflow is not sufficient to provide proper cooling. Overtemperature protection and branch circuit fusing is also provided.

### Load Capacity Ratings: (3 phase, 60 Hz)

Available Load Step Resolution: 5 or 50 KW

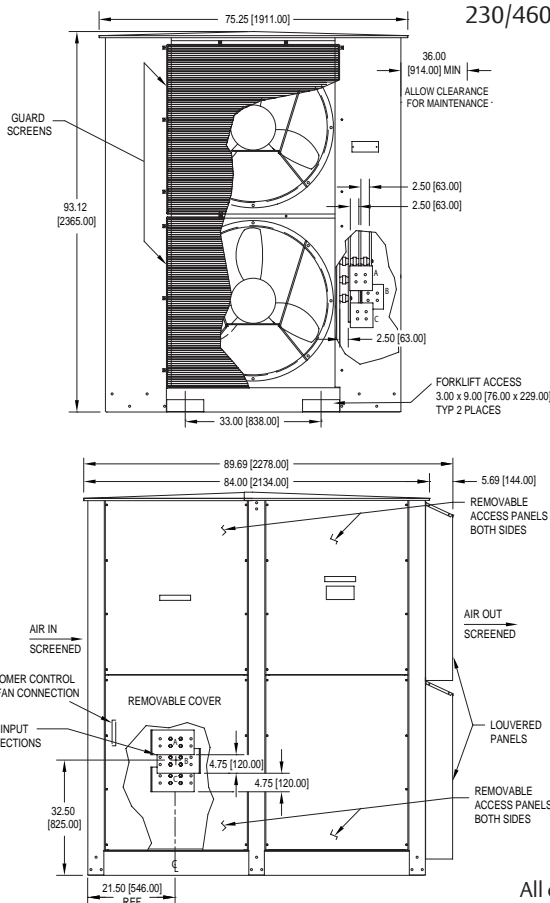
Rated KW	240/480 VAC	480 VAC
1500	✓	✓
2000		✓
2250		✓
2500		✓

### Load Bank Weight (approx.)

3600 lbs. [1633 kg]

### Options

- SIGMA™ Network Control
- ADMST™ Digital Metering (V, A, KW, Hz) with Communicator EXT™ Data Logging Software
- Meter and Control Panel Enclosure
- 230/460, 208, 230, or 575 V Blower
- Control Transformer for 208, 230, 460, 230/460, or 575 V Power



All dimensions are in inches [millimeters].



Emerson Network Power

Avtron • 6255 Halle Drive, Cleveland, Ohio 44125, U.S.A.  
216-573-7600 • FAX: 216-573-5953 • LBSales@Emerson.com

[EmersonNetworkPower.com/loadbank](http://EmersonNetworkPower.com/loadbank)

Emerson, Consider it Solved and Emerson Network Power are trademarks of Emerson Electric Co. or one of its affiliated companies. All the other marks are the property of their respective owners.

Communicator EXT™ is a trademark of Electro Industries/GaugeTech. ADMST™ is a trademark of Avtron. SIGMA™ is a trademark of NJ Froment & Co. Ltd. Specifications subject to change without notice.

©2015 Emerson Network Power

Bulletin 297 • Rev. C

EMERSON. CONSIDER IT SOLVED.™