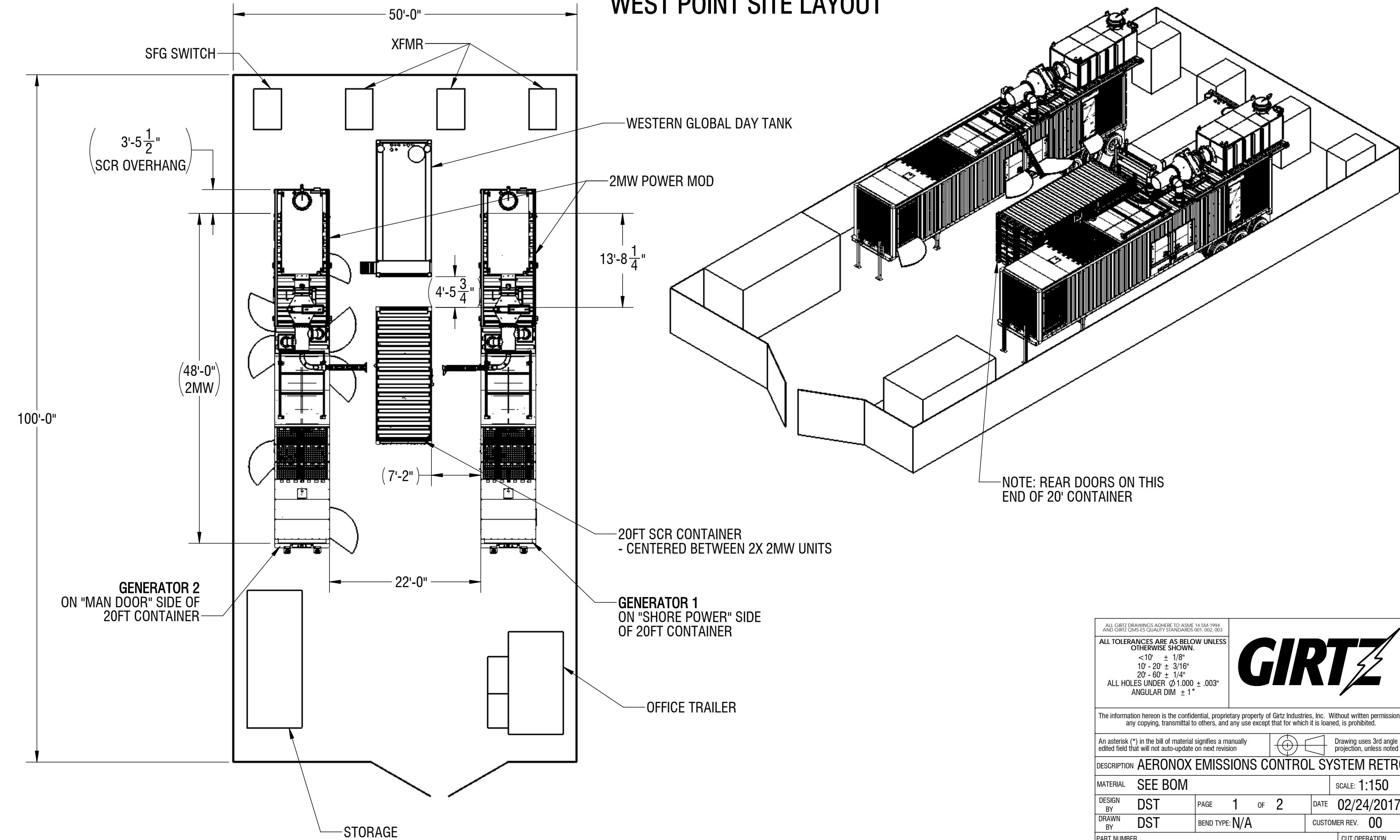


WEST POINT SITE LAYOUT



ALL GIRTZ DRAWINGS ADHERE TO ASME 14.5M-1994 AND GIRTZ QMS-ES QUALITY STANDARDS 001, 002, 003

ALL TOLERANCES ARE AS BELOW UNLESS OTHERWISE SHOWN.

<10' ± 1/8"

10' - 20' ± 3/16"

20' - 60' ± 1/4"

ALL HOLES UNDER Ø1.000 ± .003"

ANGULAR DIM ± 1°

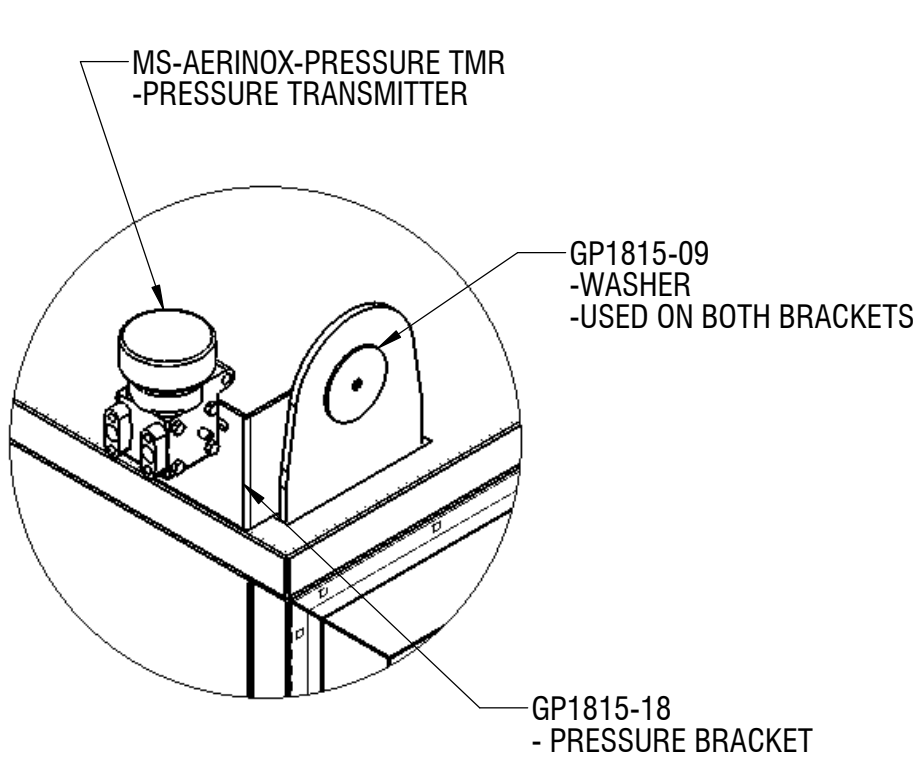
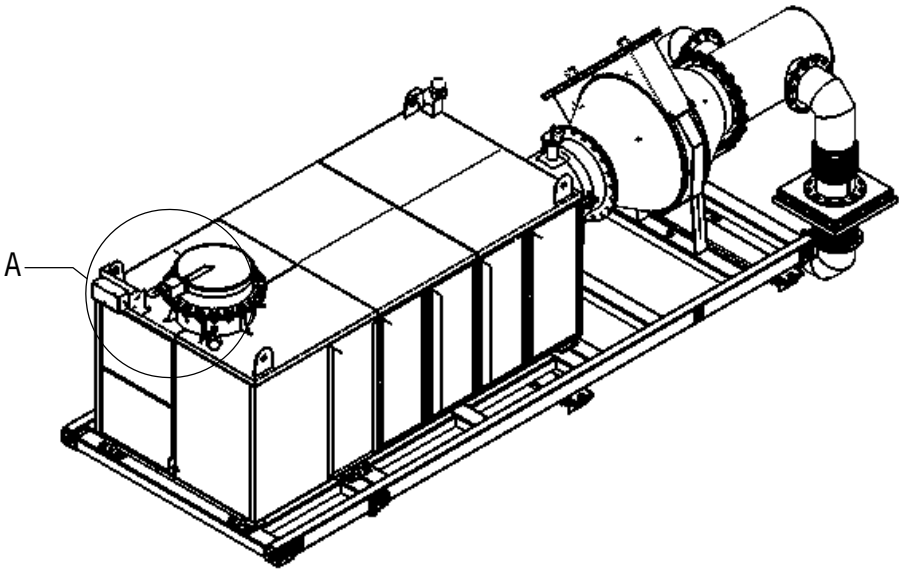
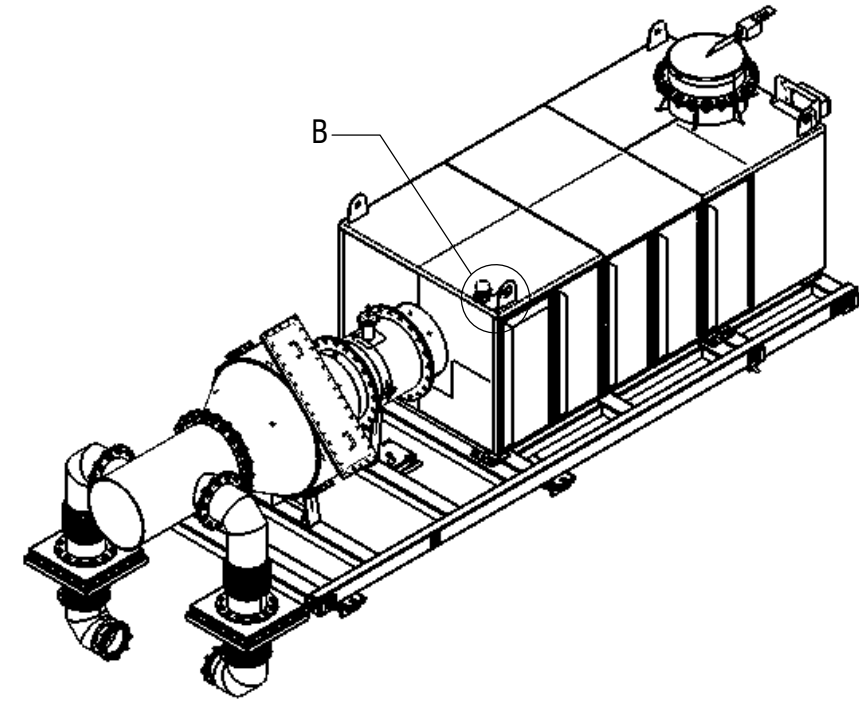
The information hereon is the confidential, proprietary property of Girtz Industries, Inc. Without written permission, any copying, transmittal to others, and any use except that for which it is loaned, is prohibited.

An asterisk (*) in the bill of material signifies a manually edited field that will not auto-update on next revision

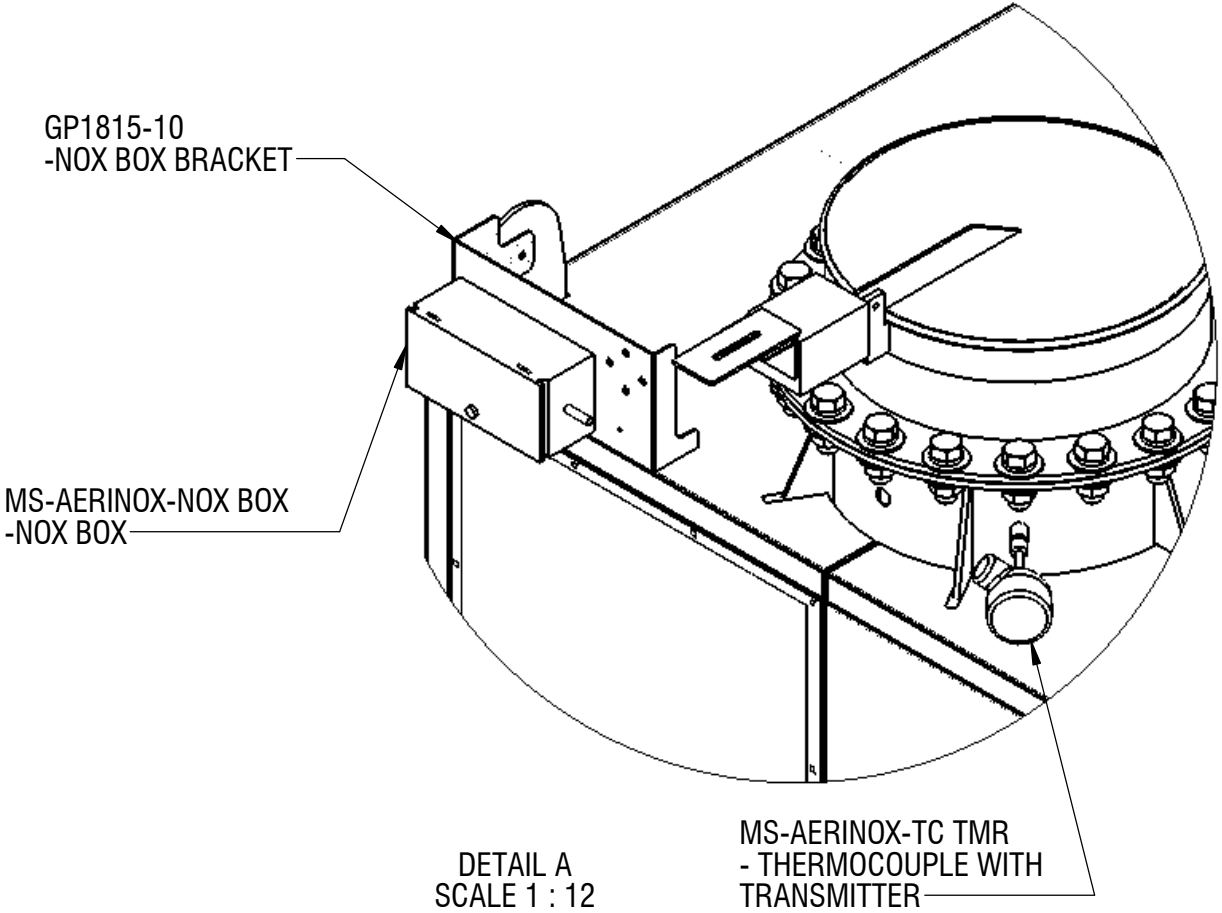
Drawing uses 3rd angle projection, unless noted

| | | | | |
|-------------------------|---------|----------------|---|------------|
| DESCRIPTION | | | AERONOX EMISSIONS CONTROL SYSTEM RETROFIT | |
| MATERIAL | SEE BOM | | SCALE: 1:150 | |
| DESIGN BY | DST | PAGE 1 OF 2 | DATE | 02/24/2017 |
| DRAWN BY | DST | BEND TYPE: N/A | CUSTOMER REV. 00 | |
| PART NUMBER | | | CUT OPERATION | |
| UR 13247-WEST POINT SCR | | | Assembly | |

SENSOR LOCATIONS



DETAIL B
SCALE 1 : 8



DETAIL A
SCALE 1 : 12

ALL GIRTZ DRAWINGS ADHERE TO ASME 14.5M-1994
AND GIRTZ QMS-ES QUALITY STANDARDS 001, 002, 003

ALL TOLERANCES ARE AS BELOW UNLESS OTHERWISE SHOWN.

<10' ± 1/8"

10' - 20' ± 3/16"

20' - 60' ± 1/4"

ALL HOLES UNDER Ø1.000 ± .003"

ANGULAR DIM ± 1°



The information hereon is the confidential, proprietary property of Girtz Industries, Inc. Without written permission, any copying, transmittal to others, and any use except that for which it is loaned, is prohibited.

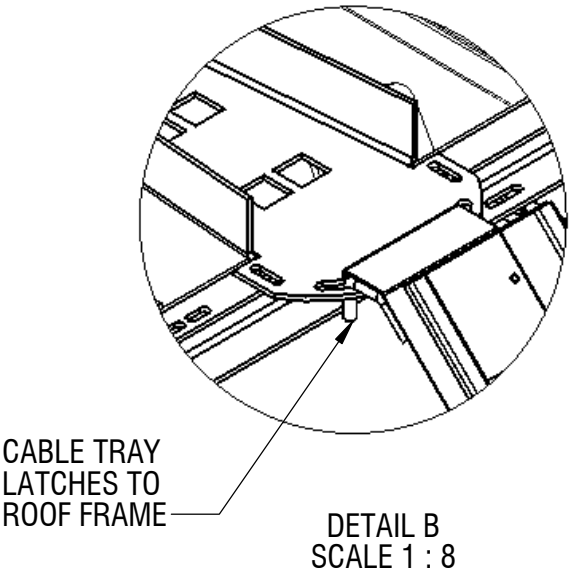
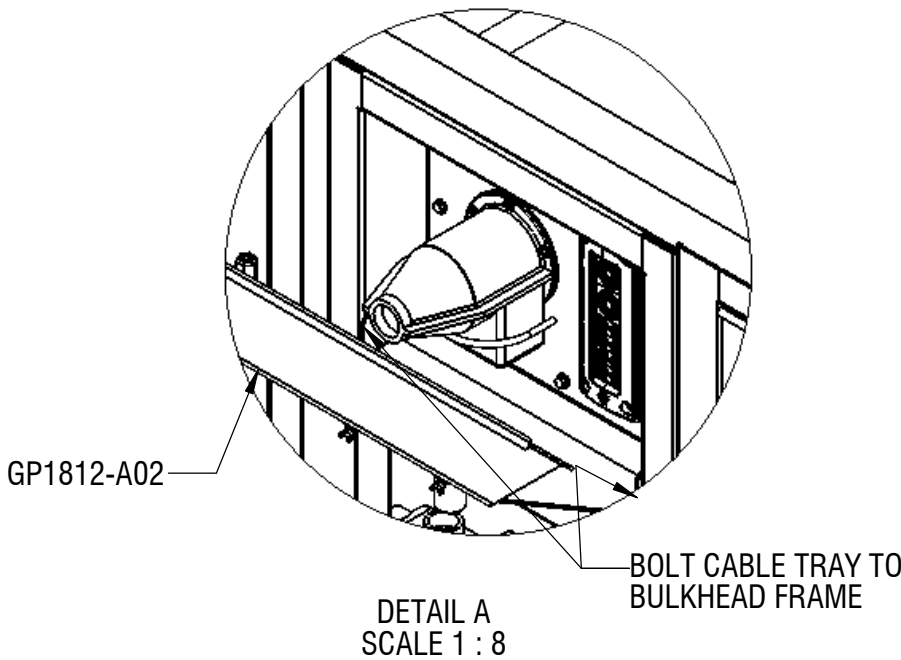
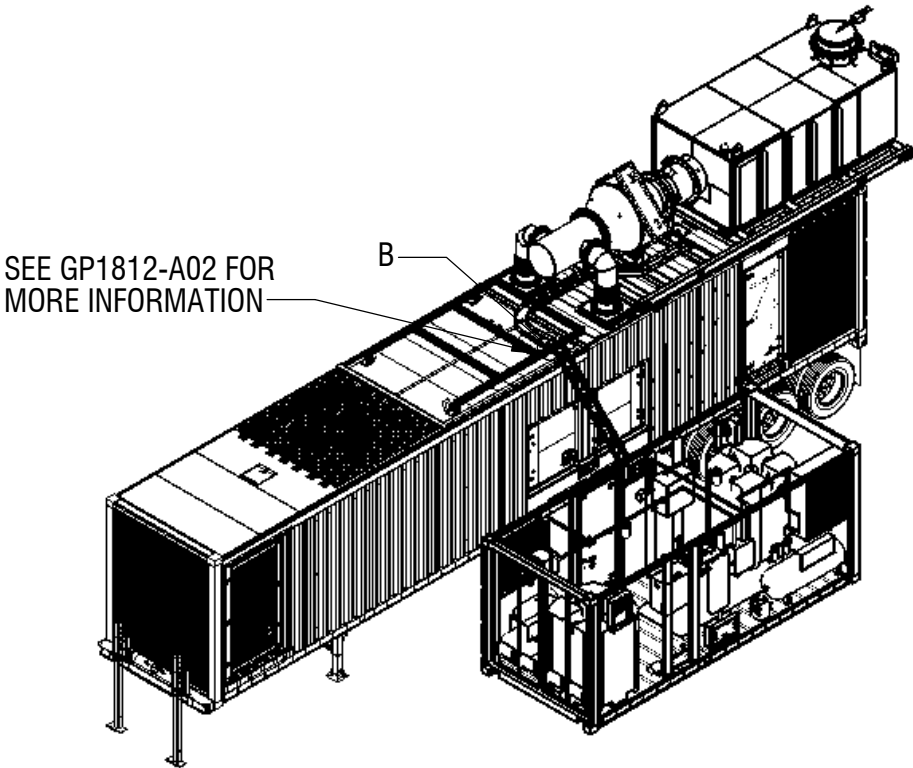
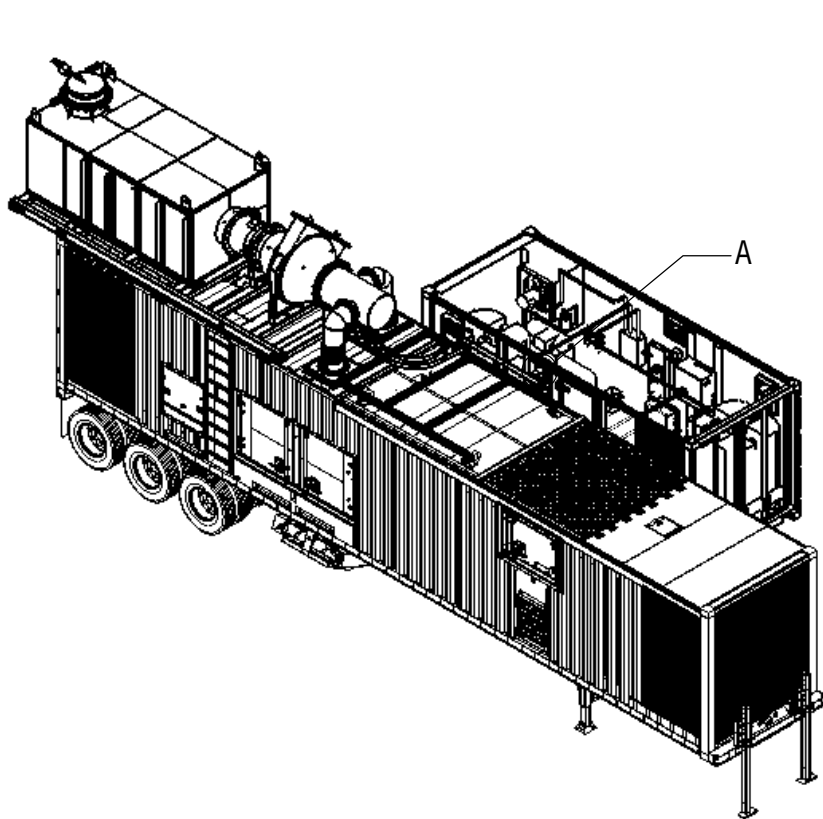
An asterisk (*) in the bill of material signifies a manually edited field that will not auto-update on next revision

Drawing uses 3rd angle projection, unless noted

DESCRIPTION AERONOX EMISSIONS CONTROL SYSTEM RETROFIT

| | | | | | |
|-------------|-------------------------|------------|--------|---------------|---------------------------|
| MATERIAL | SEE BOM | | | SCALE: | 1:120 |
| DESIGN BY | DST | PAGE | 2 OF 2 | DATE | 02/24/2017 |
| DRAWN BY | DST | BEND TYPE: | N/A | CUSTOMER REV. | 00 |
| PART NUMBER | UR 13247-WEST POINT SCR | | | | CUT OPERATION Assembly |

CABLE TRAY ASSEMBLY
-TYP 2 POWER MODS



ALL GIRTZ DRAWINGS ADHERE TO ASME 14.5M-1994
AND GIRTZ QMS-ES QUALITY STANDARDS 001, 002, 003

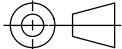
ALL TOLERANCES ARE AS BELOW UNLESS OTHERWISE SHOWN.

<10' ± 1/8"
10' - 20' ± 3/16"
20' - 60' ± 1/4"
ALL HOLES UNDER Ø1.000 ± .003"
ANGULAR DIM ± 1°



The information hereon is the confidential, proprietary property of Girtz Industries, Inc. Without written permission, any copying, transmittal to others, and any use except that for which it is loaned, is prohibited.

An asterisk (*) in the bill of material signifies a manually edited field that will not auto-update on next revision



Drawing uses 3rd angle projection, unless noted

DESCRIPTION AERONOX EMISSIONS CONTROL SYSTEM RETROFIT

| | | | | | |
|-------------|----------------------------------|------------|--------|---------------|---------------------------|
| MATERIAL | SEE BOM | | | SCALE: | 1:120 |
| DESIGN BY | DST | PAGE | 1 OF 1 | DATE | 02/24/2017 |
| DRAWN BY | DST | BEND TYPE: | N/A | CUSTOMER REV. | 00 |
| PART NUMBER | UR 13247-WEST POINT SCR - SHEET3 | | | | CUT OPERATION Assembly |